



314 Edgware Road

Edgware Road | London | W2 1DY

£409,500



314 Edgware Road

Edgware Road | London

W2 1DY

£409,500

Being Sold via Secure Sale online bidding. Terms & Conditions apply. Starting Bid £409,500

A superb location close to London's West End and Paddington, this newly refurbished apartment offers bright, convenient living space.

Arranged on the third floor, the property, which has just been completed and renovated by the current owners, offers two double bedrooms, a newly fitted bathroom, a bright open-plan reception, and a contemporary kitchen.

Located just north of Edgware Road and close to the numerous amenities of Marylebone, the apartment provides excellent access to the West End and is central to the West End.

Leasehold 999 Years from 27.06.1985

Service Charge - 22% share of Building Insurance (2024 = £645)

Ground Rent £50 pa

EPC - D

Council Tax - Westminster - E

It is a mandatory requirement for a Sales or Lettings Agent to be part of a redress scheme, we have membership with The Property Ombudsman (a Government-approved redress scheme).

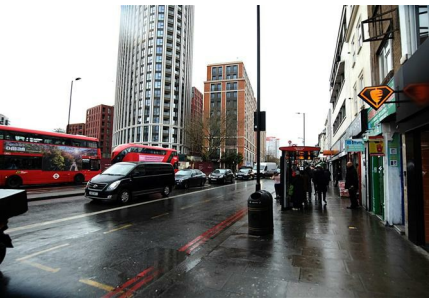
- Newly Converted
- Bright Reception
- Great Location
- Sole Agents
- 2 bedrooms
- Top Floor
- No Chain
- 960 Year lease



A superb location close to London's West End and Paddington, this newly refurbished apartment offers bright, convenient living space.

Arrange on the third floor, the property, which has just been completed and renovated by the current owners, offers two double bedrooms, a newly fitted bathroom, a bright open-plan reception, and a contemporary kitchen.

Located just north of Edgware Road and close to the numerous amenities of Marylebone, the apartment provides excellent access to the West End and is central to the West End.





Energy Efficiency Rating

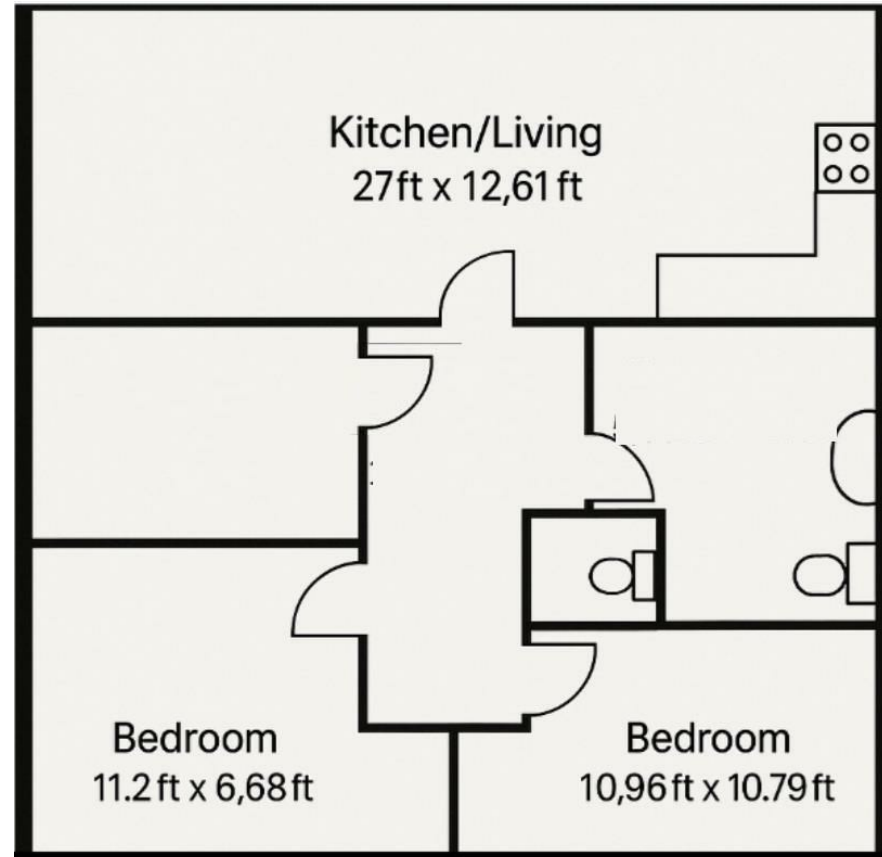
	Current	Potential
<i>Very energy efficient - lower running costs</i>		
(92 plus) A		
(81-91) B		
(69-80) C		81
(55-68) D	65	
(39-54) E		
(21-38) F		
(1-20) G		
<i>Not energy efficient - higher running costs</i>		
England & Wales	EU Directive 2002/91/EC	

Leasehold

Council Tax Band E

EPC Rating D

IMPORTANT NOTICE: All of the information is intended only as a guide to a prospective purchaser and does not constitute any part of an offer or contract. Any measurements or distances referred to herein are approximate only. Any information contained herein (whether in the text, plans or photographs) is given in good faith and cannot be relied upon as being a statement or representation of fact. Should you proceed with the purchase of the property, your solicitor must verify these details. We have not carried out a detailed survey nor tested the services, appliances and specific fittings. In accordance with current legislation we would advise you that the measurements on these particulars are imperial. The formula for conversion to metric is as follows:- 1' (one foot) = 30.4cm (centimetres), 1m (one metre) = 3'29 (feet).



3rd Floor Flat
Edgware Road W2
Total Gross Area : 580 sqft



83 Boundary Road
St John's Wood
London
NW8 0RG
0207 625 7000
enquiries@greenstonefisher.com
www.greenstonefisher.com